

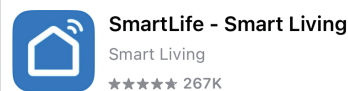
# QUICK START GUIDE

## Preparation Before Setup

### Install Required Apps

#### 1 SmartLife App

- Install "SmartLife - Smart Living"
- Log in to your account



Scan to download

#### 2 Google Home App

- Ensure **latest version** installed
- Doorbell already added in Google Home



#### Quick Notes

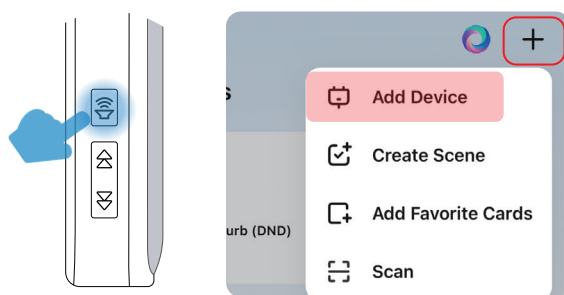
- ✓ Follow steps in order
- ✓ Do not skip steps
- ✓ Each step unlocks next

## Step 1 Set up in SmartLife & Link to Google

### 1. Add Your Chime to SmartLife app

- Power on your chime
  - Plug in the chime
  - Press and hold **Volume Button** 5s
  - Wait until LED flashes red
- Open the **SmartLife** app
  - Tap "+" (top right) → **Add Device**
  - Select **Smart WiFi Chime Pro**
  - Enter your Wi-Fi password, tap **Done**

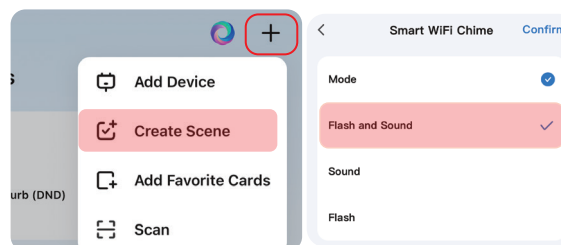
(⚠ **Note:** Only supports **2.4GHz** or **dual-band 2.4/5 GHz Wi-Fi**).



### 2. Create a Chime Scene (Tap-to-Run)

From the home screen:

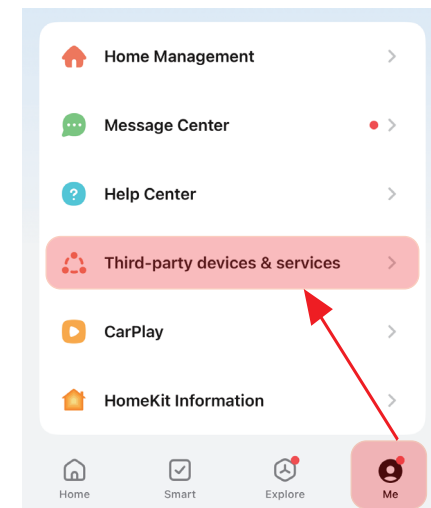
- Tap "+" (top right)
- Tap **Create Scene**
- Tap **Launch Tap-to-Run**
- Tap to add a task
- Tap **Device**
  - **Select a single device**
  - **Select your chime**
- Set **Mode** to "**Flash and Sound**", then tap **Confirm**  
(💡 **Tip:** Select "**Flash**" for silent mode)
- Tap **Save** and give it a **name** such as: "**Ring the Chime**".



### 3. Link to Google Home (App-to-App linking)

From the home screen:

- Tap the "**Me**" tab in the bottom menu
- Tap **Third-party devices & services**
- Select **Google**
- Tap **Link to Google**
- **Follow** the on-screen instructions to complete linking.



## Step 2 Create a Google Home Automation

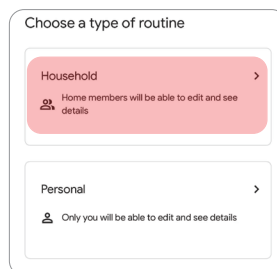
(Final Step!)

### 2-1 Choose a Household Automation

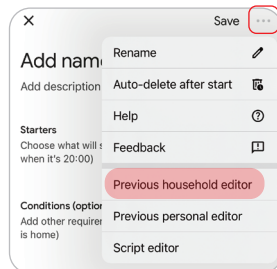
- Open the **Google Home** app
- Tap "+" (top right corner)
- Select **Automation**



- ✓ Option A
  - Select **Household Routine**



- ✓ Option B
  - Tap **⋮** (top right)
  - Select **Previous household editor**



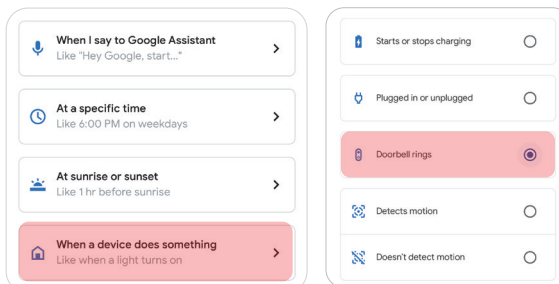
#### Important Note

Google Home updates frequently. Regardless of your layout, always ensure you are creating a **Household Routine** (not Personal) to proceed.

### 2-2 Add Starters + Add starter

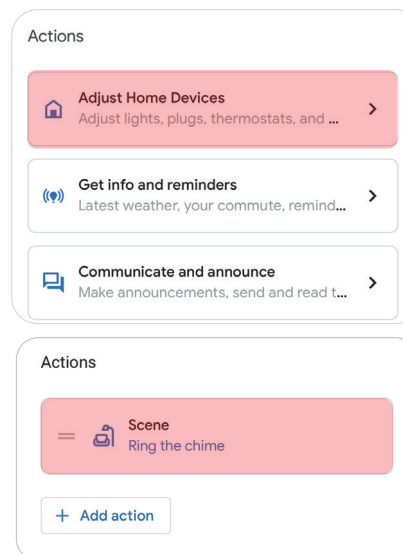
- Tap **+ Add starter**
- Select **When a device does something**
  - Choose **your Nest doorbell**
  - Select **Doorbell rings**
  - Tap **Add starter**

**Note:** You can limit the automation to specific times or days.



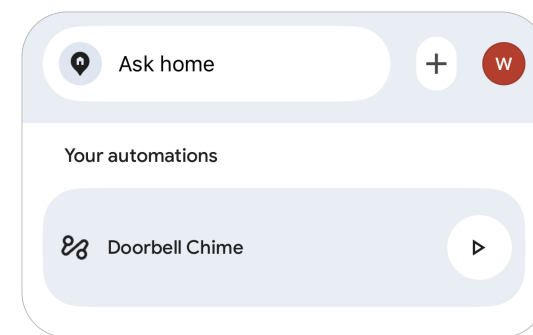
### 2-3 Add Actions + Add action

- Tap **+ Add action**
- Select **Adjust Home Devices**
  - Choose **Add scenes**
  - Select **the scene** you created in
    - SmartLife (e.g., "Ring the Chime")
  - Tap **Add action** to confirm



### 2-4 Save & Test Your Setup

- Tap **Untitled** to name your Routine (e.g., "Doorbell Chime")
- Tap **Save** in the bottom-right corner.



#### Setup Complete!

Press your Nest Doorbell to test the automation. When someone rings the doorbell, your chime should sound automatically.