

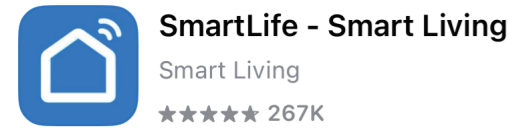
QUICK START GUIDE

Step 1 Set Up in SmartLife

Install Required Apps

1 SmartLife App

- Install "SmartLife - Smart Living"
- Log in to your account



Scan to download

2 Google Home App

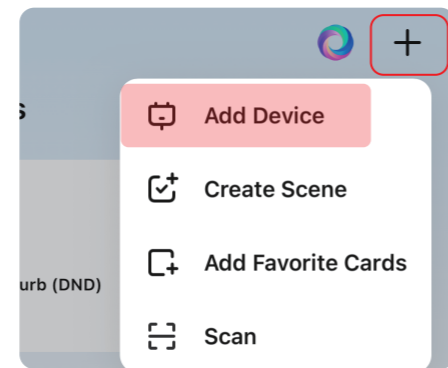
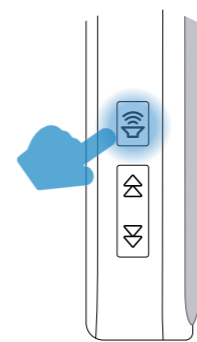
- Ensure **latest version** installed
- Doorbell already added in Google Home



- Quick Notes**
- ✓ Follow steps in order
 - ✓ Do not skip steps
 - ✓ Each step unlocks next

1-1 Add Your Chime to SmartLife app

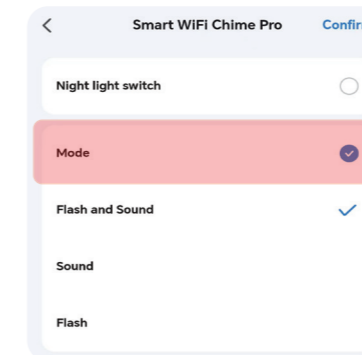
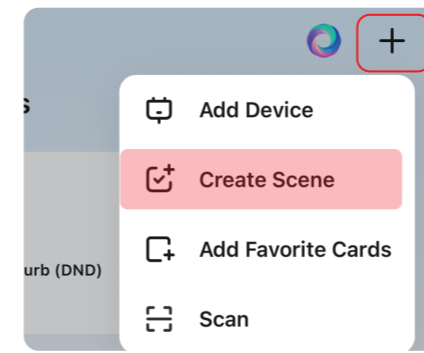
- Power on your chime
 - Plug in the chime
 - Press and hold **Volume Button** 5 seconds
 - Wait until LED flashes red
- Open the **SmartLife** app
 - Tap "+" (top right) → **Add Device**
 - Select **Smart WiFi Chime Pro**
 - Enter your Wi-Fi password, tap **Done**.



1-2 Create a Chime Scene (Tap-to-Run)

From the SmartLife home screen:

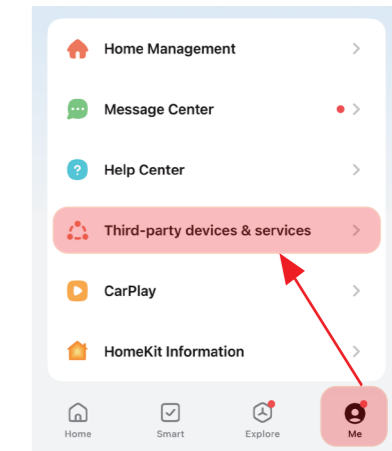
- Tap "+" (top right) → Tap **Create Scene**
- Tap **Launch Tap-to-Run** → Tap to add a task
- Tap **Device**
 - **Select a single device**
 - Select **your chime**
- Set **Mode** to "Flash and Sound", then tap **Confirm**
(💡 Tip: Select "Flash" for silent mode)
- Tap **Save** and give it a name such as: "Ring the Chime"



1-3 Link SmartLife to Google (App-to-App linking)

From the SmartLife home screen:

- Tap the **Me** (bottom menu)
- Tap **Third-party devices & services**
- Select **Google**, tap **Link to Google**
- **Follow** the on-screen instructions to complete linking.



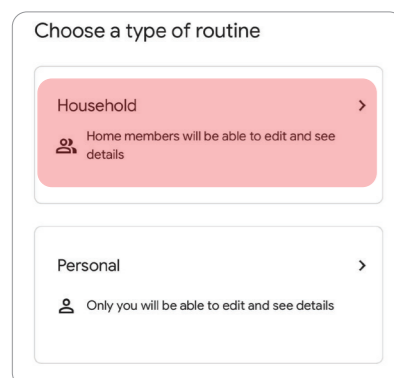
Step 2 Create a Google Home Automation

2-1 Choose a Household Automation

- Open the **Google Home** app
- Tap "+" (top right corner)
- Select **Automation**

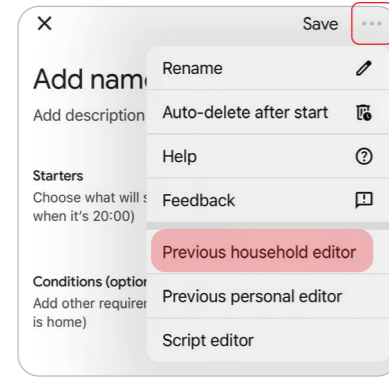
Option A

- Select **Household Routine**



Option B

- Tap (top right)
- Select **Previous household editor**

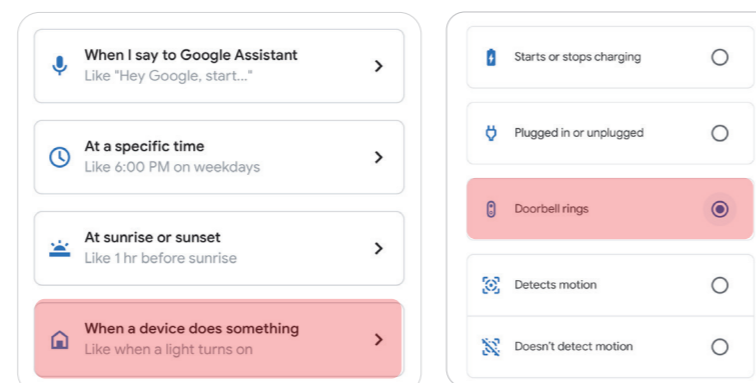


⚠ Important Note

Google Home updates frequently. Regardless of your layout, always ensure you are creating a **Household** Routine (not Personal) to proceed.

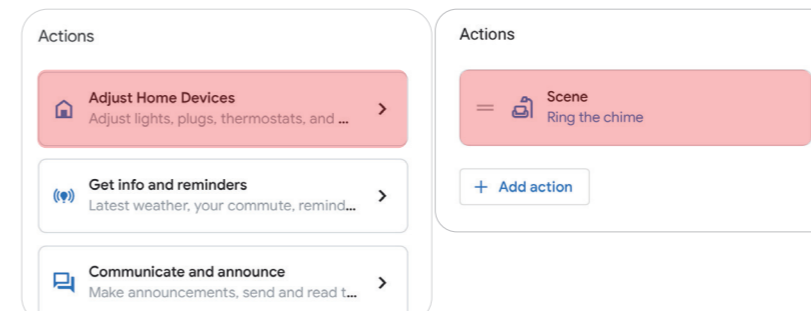
2-2 Add Starters

- Select **When a device does something**
- Choose **your Nest doorbell**
- Select **Doorbell rings**
- Tap **Add starter**



2-3 Add Actions

- Select **Adjust Home Devices**
- Choose **Add scenes**
- Select **the scene** you created in SmartLife
- Tap **Add action** to confirm



2-4 Save & Test Your Setup

- Tap to name your Routine (e.g., "Doorbell Chime")
- Tap **Save** in the bottom-right corner.

Setup Complete!

Press your Nest Doorbell to test the automation. Your chime should now ring automatically.